



26 Selworthy Road, Bristol , BS4 2LF

£1,650 PCM

- Terraced House
- Three Double Bedrooms
- Modern Bathroom
- Gas Central Heating
- Security Deposit: £1903
- Large Through Reception Room
- Fitted Kitchen Diner
- Good Sized Rear Garden
- Double Glazing
- Holding Deposit - £380

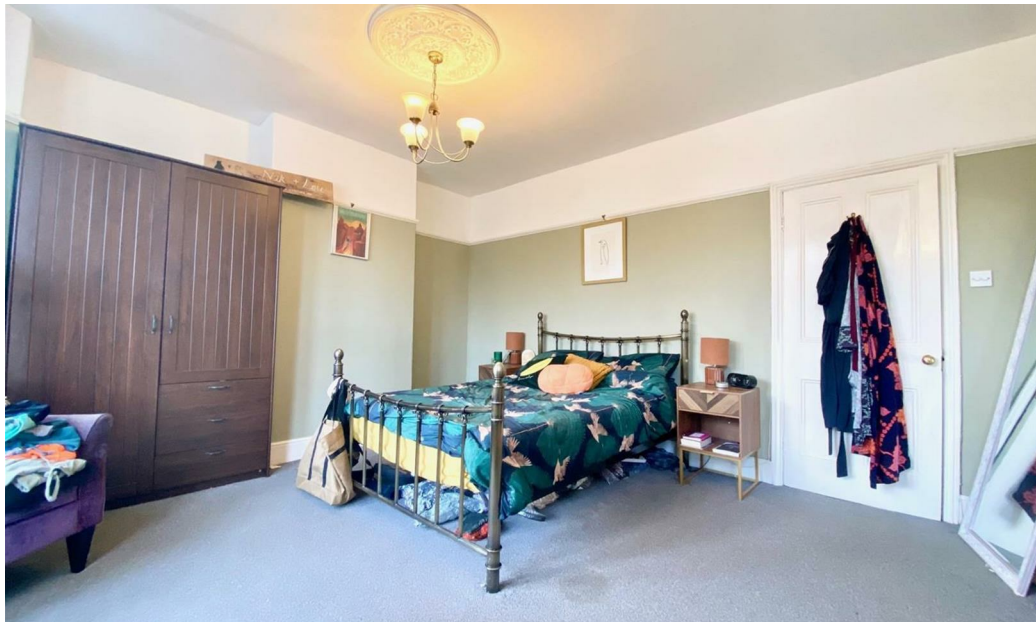
Beautiful Three Bedroom Property.

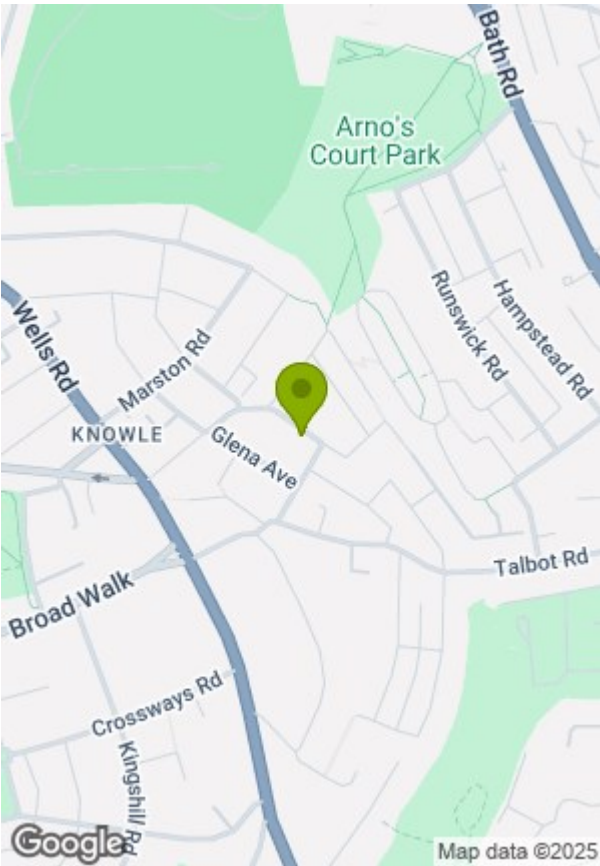
A lovely large family home situated in a residential area conveniently located to all amenities of Broad Walk Shopping Centre and bus routes. The property comprises of a large through lounge reception room, with a bay window and French doors leading to a good sized rear garden. At the rear of the property there is a large fitted kitchen diner. Upstairs are three double bedrooms and a modern refurbished bathroom with a shower over the bath.

Council Tax Band: C

EPC rating: D







Energy Efficiency Rating		
	Current	Potential
Very energy efficient - lower running costs		
(92 plus) A		83
(81-91) B		
(69-80) C		
(55-68) D	64	
(39-54) E		
(21-38) F		
(1-20) G		
Not energy efficient - higher running costs		
England & Wales EU Directive 2002/91/EC		

Environmental Impact (CO ₂) Rating		
	Current	Potential
Very environmentally friendly - lower CO ₂ emissions		
(92 plus) A		
(81-91) B		
(69-80) C		
(55-68) D		
(39-54) E		
(21-38) F		
(1-20) G		
Not environmentally friendly - higher CO ₂ emissions		
England & Wales EU Directive 2002/91/EC		

These particulars, whilst believed to be accurate are set out as a general outline only for guidance and do not constitute any part of an offer or contract. Intending purchasers should not rely on them as statements of representation of fact, but must satisfy themselves by inspection or otherwise as to their accuracy. No person in this firms employment has the authority to make or give any representation or warranty in respect of the property.